



WELCOME

You are currently muted.

You will be unmuted during the Q&A session.



AGENDA

- **Purpose**
 - Erik Alexander, President, E&S Ring Management
- **Overview of New Design Features**
 - Philip Kang, Chief Investment Officer, E&S Ring Management
- **Architectural Concepts**
 - Patrick Winters, Nadel Architects
- **Landscape Concepts**
 - Darren Shirai, AHBE | MIG
- **General Q&A and Closing Comments**
 - Erik Alexander and Team



PURPOSE





OVERVIEW OF NEW DESIGN FEATURES





ARCHITECTURAL CONCEPTS



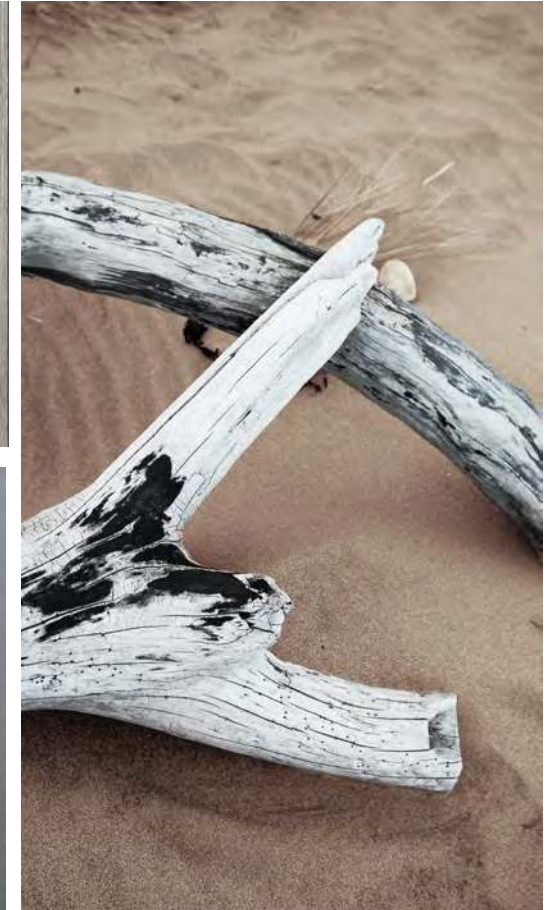
REFERENCE IMAGES



Ben's Barn, Caleb Johnson Studio



Grey-Brown wooden planks, Metal panel



Bleached drift wood

CONCEPT INSPIRATION



RESIDENTIAL EXTERIORS (BUILDING TYPE I SHOWN)



RESIDENTIAL EXTERIORS



THE VILLAGE - PROPOSED EXTERIOR



EXISTING



PROPOSED



THE VILLAGE - ENTRY RENDERING



LANDSCAPE CONCEPTS

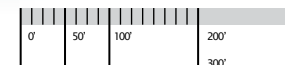


MATERIALS LEGEND

	NATURAL WATER FEATURES
	POOLS & SPAS
	PLANTING AREAS
	SYNTHETIC TURF
	CONCRETE PAVING
	CONCRETE ACCENT PAVING
	CONCRETE UNIT PAVERS
	CONCRETE POOL DECKING WITH COOL DECK FINISH
	ASPHALT PAVING
	WOOD-LIKE MATERIAL DECKING
	SAND
	SPORTS COURT SURFACING
	RUBBERIZED PLAY SURFACING
	CROSS-FIT RUBBER TILES

KEYNOTE LEGEND

①	CHANNEL WALK
②	OLD HARBOR LANE
③	CAPTAINS ROW
④	NORTH WEST PASSAGE
⑤	MAIN POOL DECK
⑥	THE VILLAGE
⑦	RESIDENT PARK
⑧	ACTIVITY DECK
⑨	COURTYARD
⑩	BARBECUE AREA



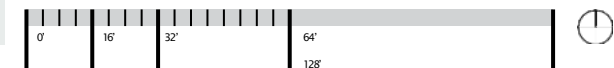
OVERALL LANDSCAPE CONCEPT PLAN



MATERIALS LEGEND

- NATURAL WATER FEATURES
- PLANTING AREAS
- CONCRETE PAVING
- CONCRETE ACCENT PAVING
- CONCRETE UNIT PAVERS
- ASPHALT PAVING
- WOOD-LIKE MATERIAL DECKING

KEYMAP



THE VILLAGE - PLAN ENLARGEMENT



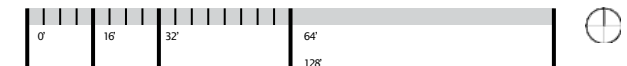
MATERIALS LEGEND

- NATURAL WATER FEATURES
- POOLS & SPAS
- PLANTING AREAS
- CONCRETE PAVING
- CONCRETE ACCENT PAVING
- CONCRETE POOL DECKING WITH COOL DECK FINISH
- WOOD-LIKE MATERIAL DECKING
- PAVILION

KEYNOTE LEGEND

- ① MAIN POOL DECK
- ② THE VILLAGE

KEYMAP



MAIN POOL DECK - PLAN ENLARGEMENT



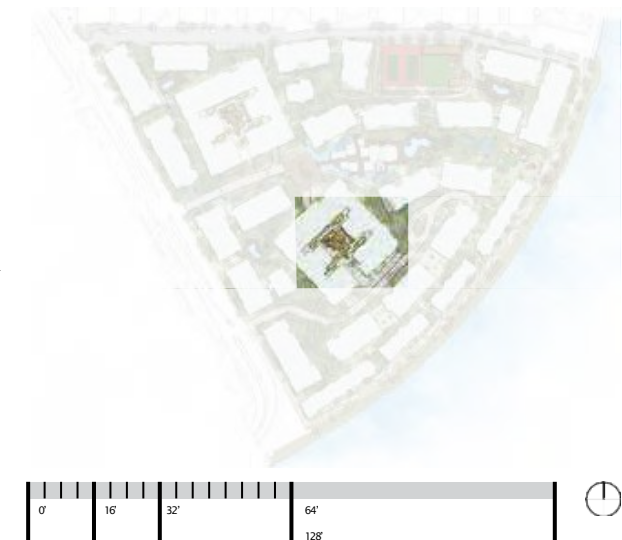
MATERIALS LEGEND

- PLANTING AREAS
- CONCRETE PAVING
- WOOD-LIKE MATERIAL DECKING
- PAVILION

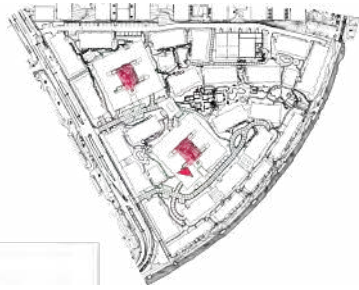
KEYNOTE LEGEND

- ① PAVILLION , TYP
- ② FIRE FEATURE , TYP
- ③ WATER FEATURE
- ④ RAISED PLANTER WITH BUILT-IN SEATING

KEYMAP



IB COURTYARD - PLAN ENLARGEMENT



EXISTING



PROPOSED

IA & IB COURTYARDS -VIEW FACING NORTH



EXISTING



PROPOSED

BARBEQUE AREA - TYPICAL ELEMENTS & LAYOUT



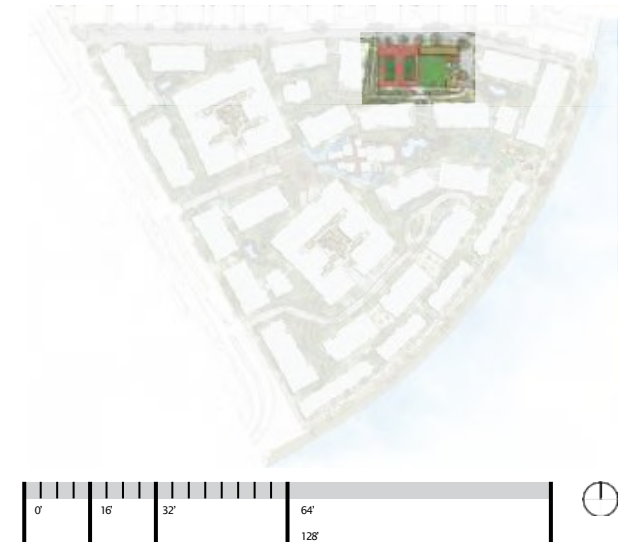
MATERIALS LEGEND

NATURAL WATER FEATURES	WOOD-LIKE MATERIAL DECKING
PLANTING AREAS	SAND
SYNTHETIC TURF	SPORTS COURT SURFACING
CONCRETE PAVING	RUBBERIZED PLAY SURFACING
CONCRETE ACCENT PAVING	PAVILION
ASPHALT PAVING	CROSS-FIT RUBBER TILES

KEYNOTE LEGEND

① CHILDREN'S PLAY AREA	⑤ NEW RESTROOMS
② ADULT FITNESS AREA	⑥ NEW STAIR
③ EXISTING TENNIS COURTS	⑦ NEW ADA RAMP
④ RELOCATED TRASH ENCLOSURE	

KEYMAP



ACTIVITY DECK - PLAN ENLARGEMENT



EXISTING



PROPOSED

ACTIVITY DECK - ADULT FITNESS AREA



EXISTING



PROPOSED

ACTIVITY DECK - CHILDREN'S PLAY AREA VIEW SOUTH



MATERIALS LEGEND

- NATURAL WATER FEATURES
- PLANTING AREAS
- SYNTHETIC TURF
- CONCRETE PAVING
- CONCRETE ACCENT PAVING
- CONCRETE UNIT PAVERS
- CONCRETE POOL DECKING WITH COOL DECK FINISH
- WOOD-LIKE MATERIAL DECKING
- SHADE SAIL

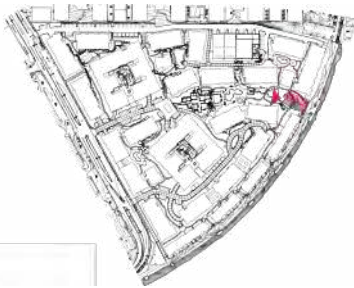
KEYNOTE LEGEND

- | | |
|-----------------|--------------|
| ① CHANNEL WALK | ③ DOG PARK |
| ② HAMMOCK GROVE | ④ FIRE COURT |

KEYMAP



RESIDENT PARK - PLAN ENLARGEMENT

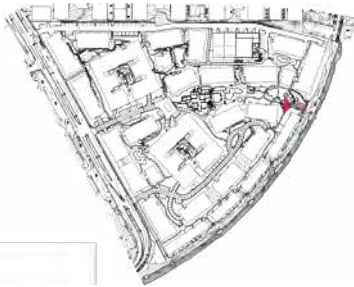


EXISTING



PROPOSED

RESIDENT PARK - VIEW LOOKING TOWARDS CHANNEL



EXISTING



PROPOSED

RESIDENT PARK - FIRE COURT VIEW TOWARDS CHANNEL

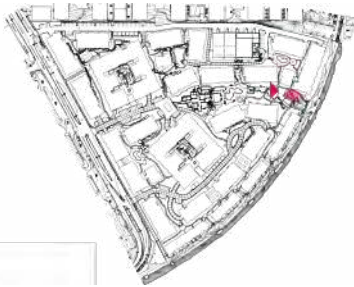


EXISTING



PROPOSED

RESIDENT PARK - DOG PARK VIEW TOWARDS CHANNEL

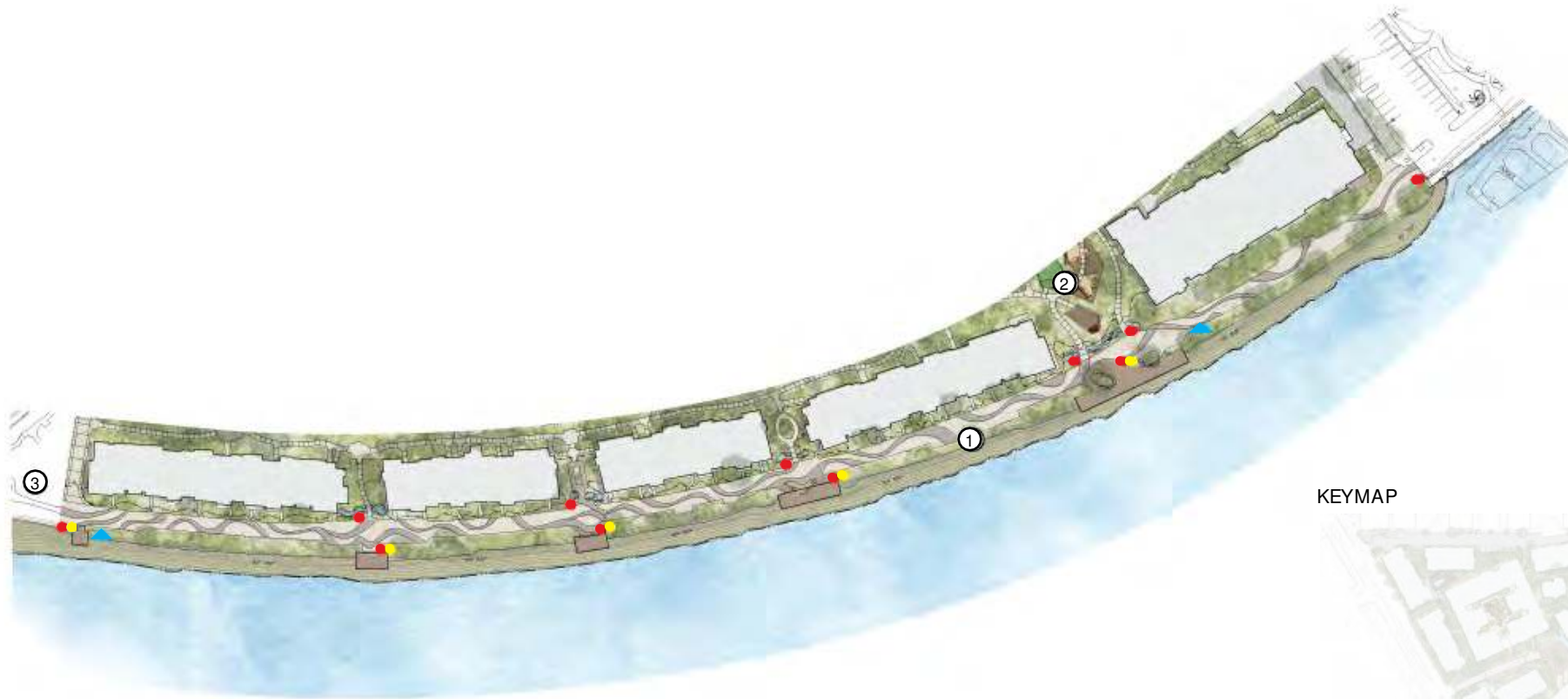


EXISTING



PROPOSED

RESIDENT PARK - HAMMOCK GROVE VIEW TOWARDS CHANNEL



KEYMAP



MATERIALS LEGEND

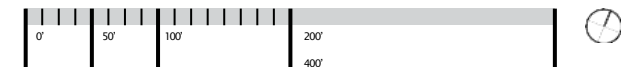
- NATURAL WATER FEATURES
- PLANTING AREAS
- CONCRETE PAVING
- CONCRETE ACCENT PAVING
- CONCRETE UNIT PAVERS
- WOOD-LIKE MATERIAL DECKING

AMENITY LEGEND

- TRASH RECEPTACLES
- PET WASTE STATIONS
- WATER BOTTLE FILLING STATIONS/DRINKING FOUNTAIN

KEYNOTE LEGEND

- ① CHANNEL WALK
- ② RESIDENT PARK
- ③ AUBREY E AUSTIN PARK



CHANNELWALK PROMENADE - PLAN ENLARGEMENT



EXISTING



PROPOSED

CHANNEL WALK PROMENADE - COMMUNITY GATEWAY

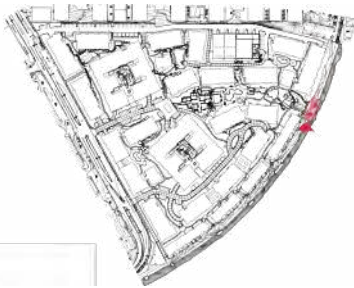


EXISTING



PROPOSED

CHANNEL WALK PROMENADE - PROJECT SITE THRESHOLD



EXISTING



PROPOSED

CHANNEL WALK PROMENADE - TYPICAL LOOK OUT



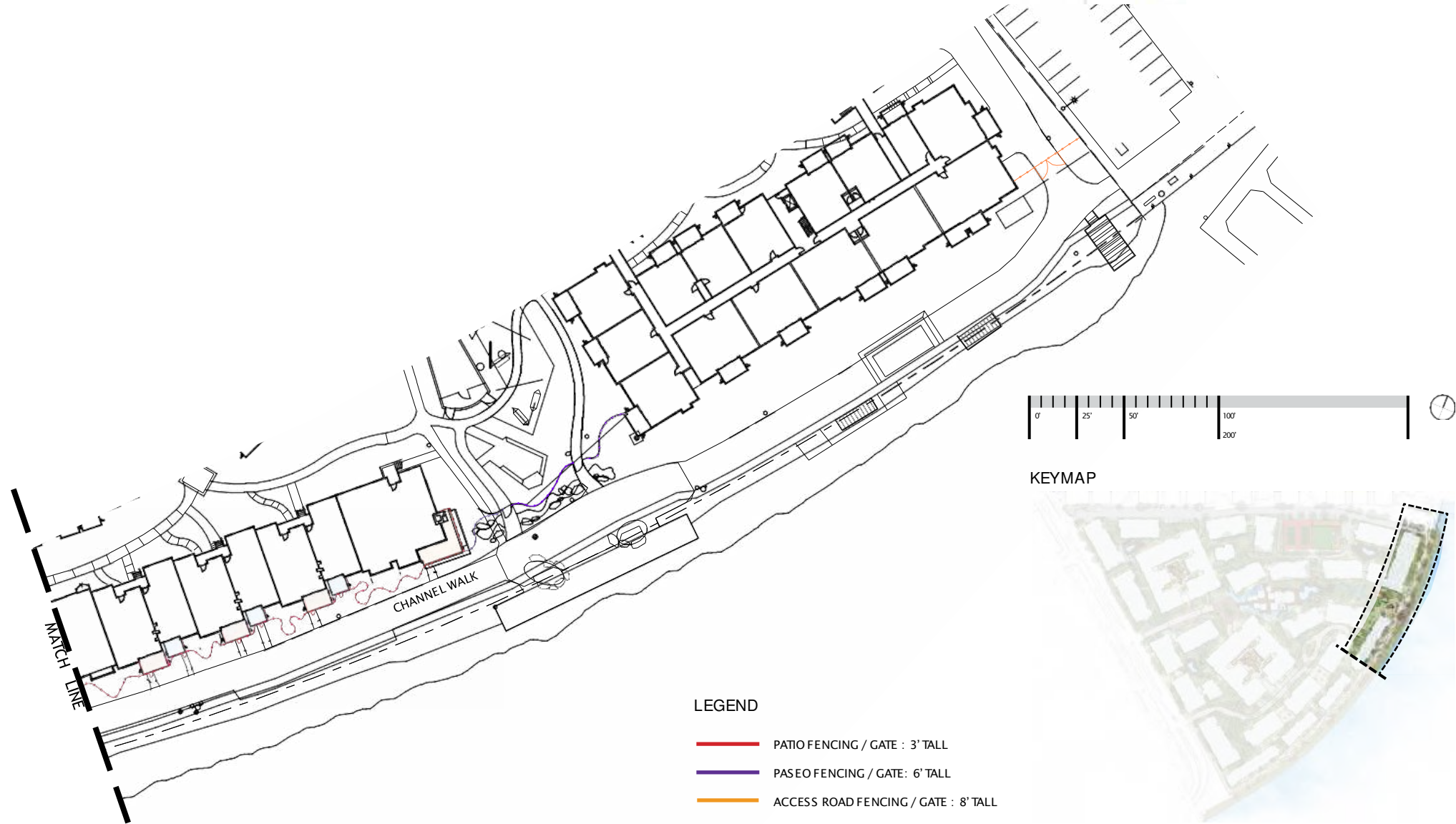
KEYMAP



LEGEND

- PATIO FENCING / GATE : 3' TALL
- PASEO FENCING / GATE: 6' TALL
- ACCESS ROAD FENCING / GATE : 8' TALL

CHANNEL WALK PROMENADE - FENCING DIAGRAM WEST



CHANNEL WALK PROMENADE - FENCING DIAGRAM EAST



3' TALL DUNE FENCE



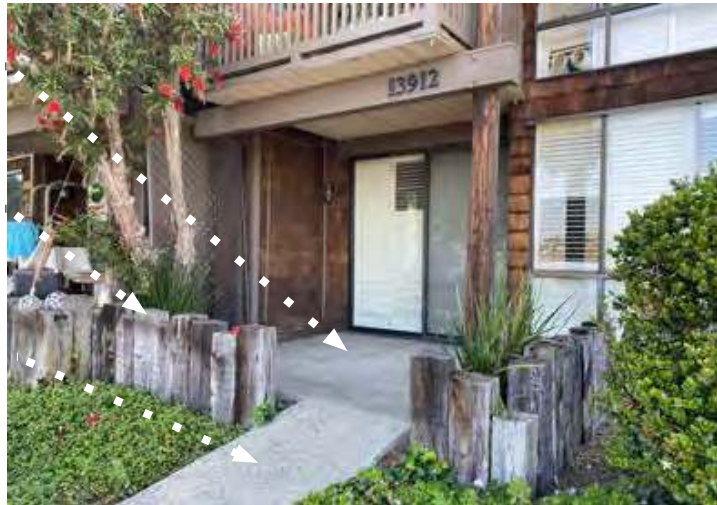
6' TALL VERTICAL PICKET FENCE & FOB- CONTROLLED GATE

CHANNEL WALK PROMENADE - PROPOSED FENCING IMAGERY

EXISTING PATIO TO REMAIN

EXISTING WOOD EDGING TO BE REMOVED

EXISTING CONCRETE WALKWAY TO REMAIN



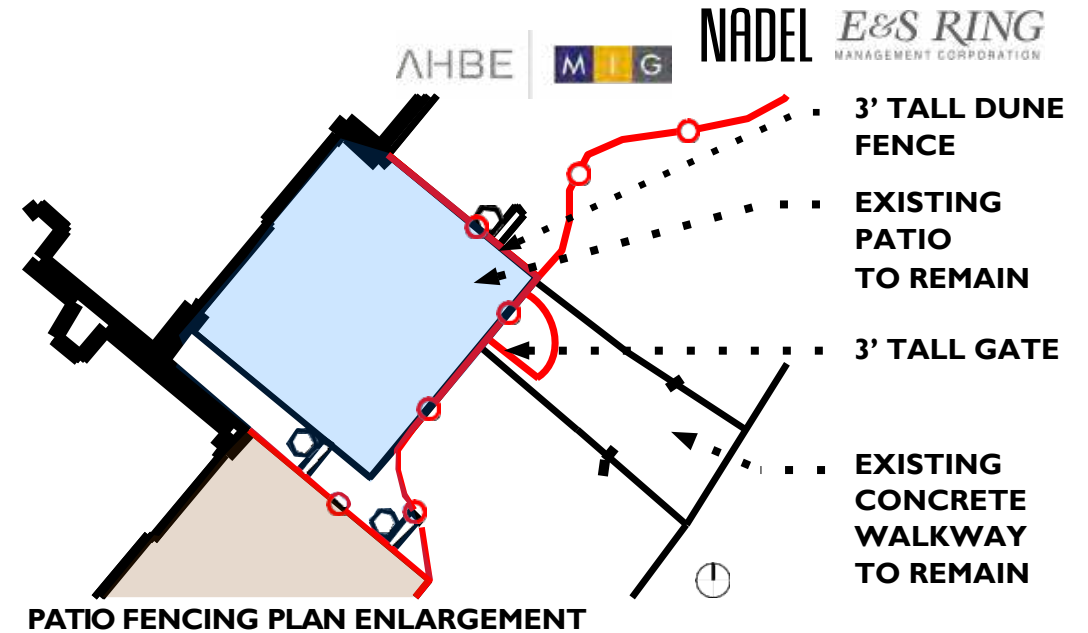
EXISTING PATIO

3' TALL GATE

3' TALL DUNE FENCE



PROPOSED PATIO



PATIO FENCING PLAN ENLARGEMENT

3' TALL GATE

3' TALL DUNE FENCE

EXISTING CONCRETE WALKWAY TO REMAIN



PROPOSED VIEW FROM CHANNEL

PROPOSED PROMENADE FENCING AT PATIOS

6'-0" TALL
VERTICAL PICKET
FENCE

6'-0" TALL
FOB-CONTROLLED
GATE

NEW CONCRETE
WALKWAY

NEW CHANNEL
WALK PAVING



CHANNEL WALK PROMENADE - FOB-CONTROLLED GATE & FENCING

LEGEND

- GATED AUTO ENTRIES
- ▲ KEY FOBS AT GATES



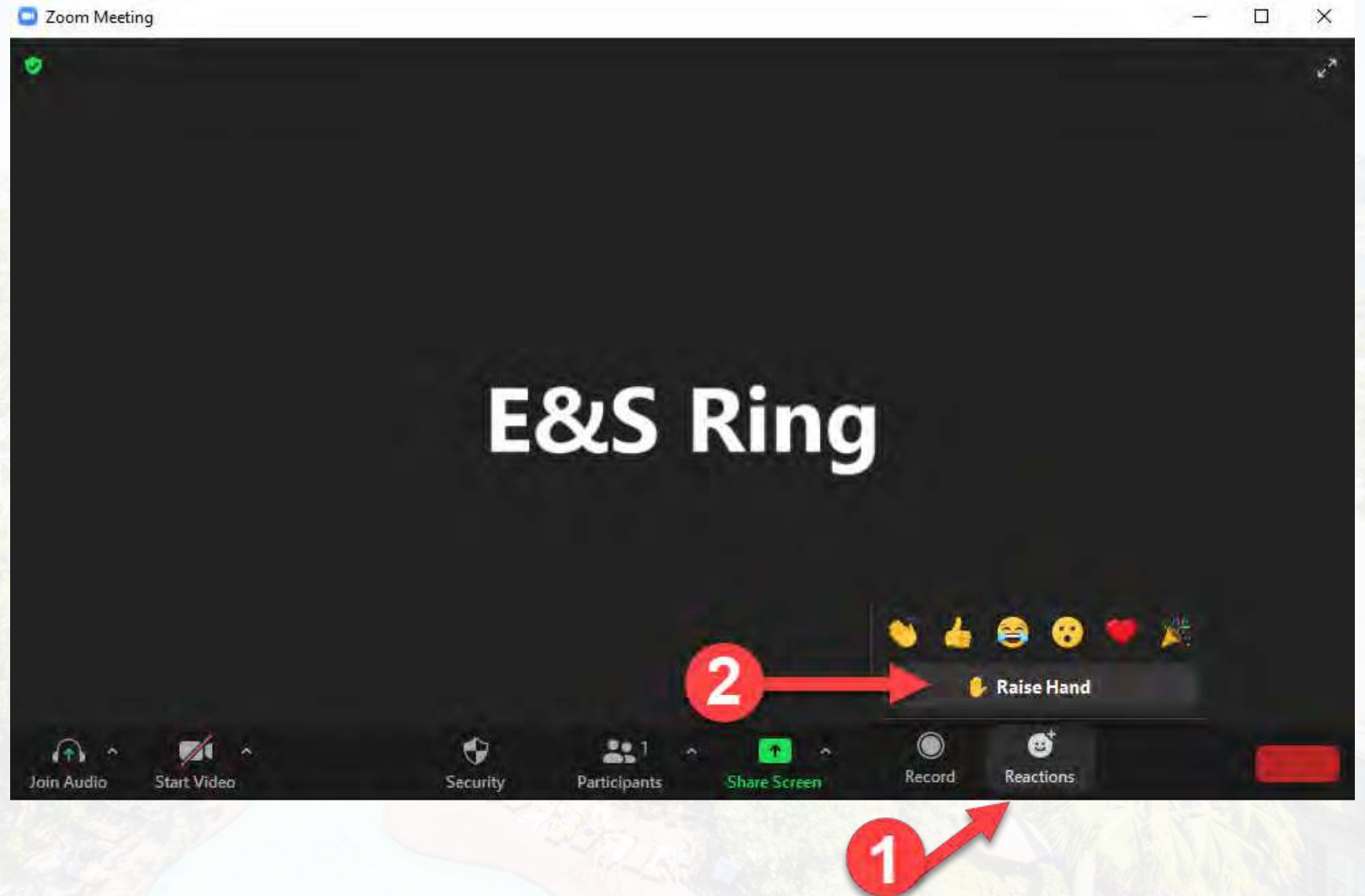
PARKING ENTRY AND POOL GATE LOCATIONS



Q&A



1. Please use Zoom to “Raise Hand”
2. You’ll be unmuted in the order of “Raise Hand”



THANK YOU

Submit Your Comments About the Renovation Plans

- Visit parcel113mdr.com/renovations to post your questions
- The Comment Form will be closed at **6 pm Pacific Time on May 7**

Questions and Comments About Other Areas

- Contact Resident Services
[\(310\)821-4916](tel:3108214916)
mv@esring.com